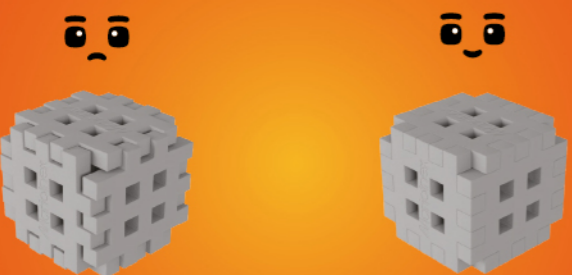
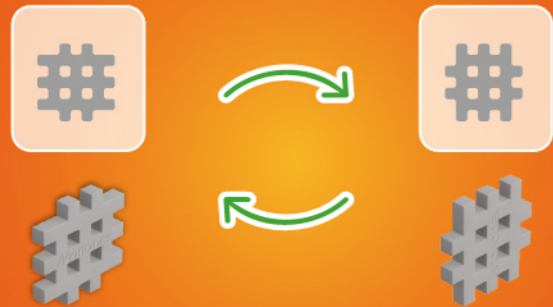


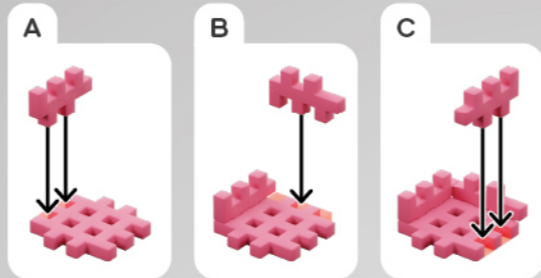


# MINI WAFFLE POCKET PETS PUPPIES

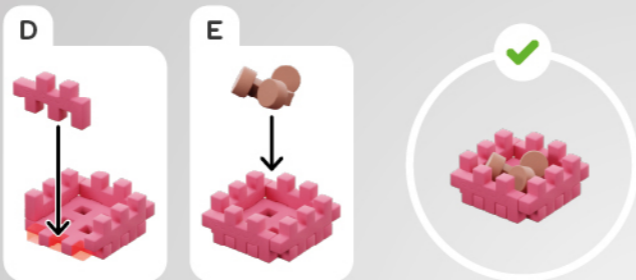
# MINI WAFFLE POCKET PETS PUPPIES



- 1x
- 4x
- 3x

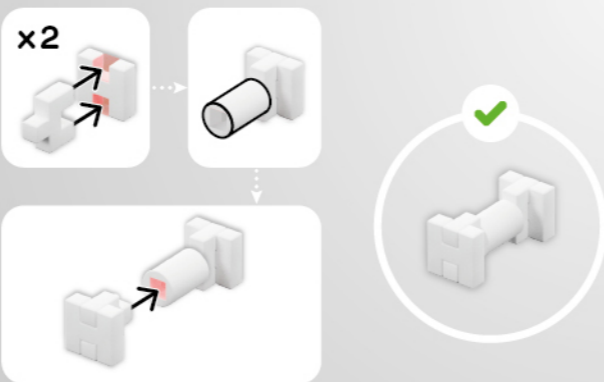


1



2

- 2x
- 2x
- 1x

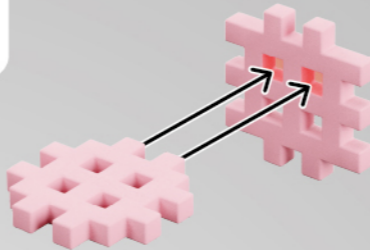


3

- 1x
- 1x

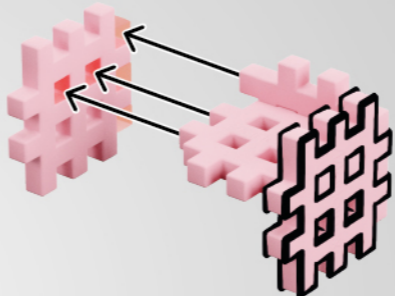


- 1x
- 1x



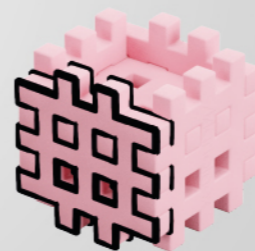
4

- 2x



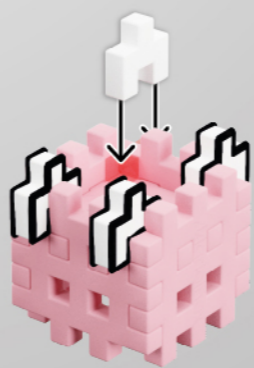
5

- 1x



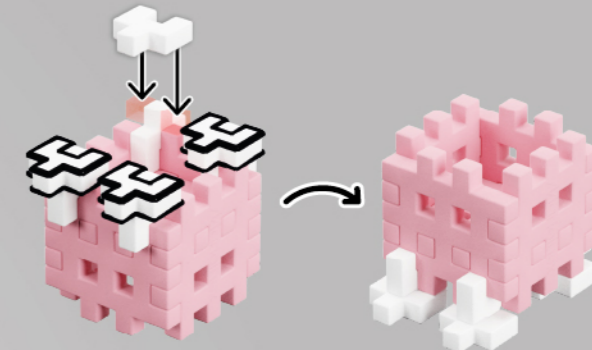
6

- 4x



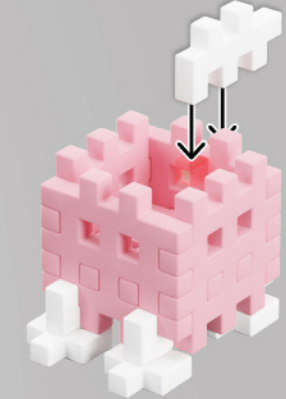
7

- 4x



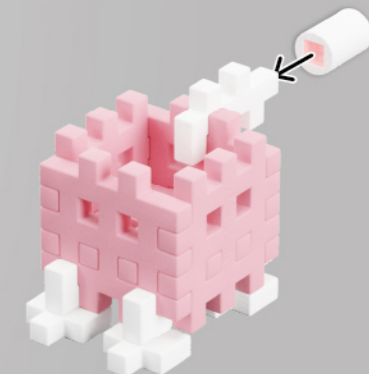
8

- 1x



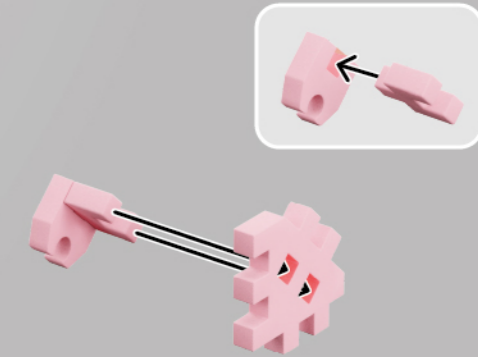
9

- 1x

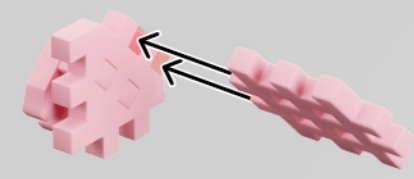
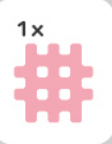


10

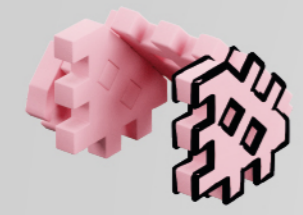
- 1x
- 1x
- 1x



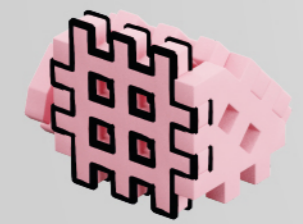
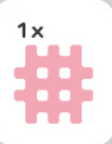
11



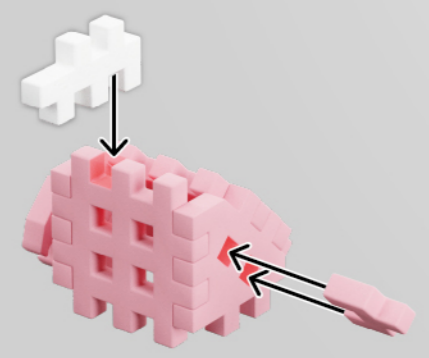
12



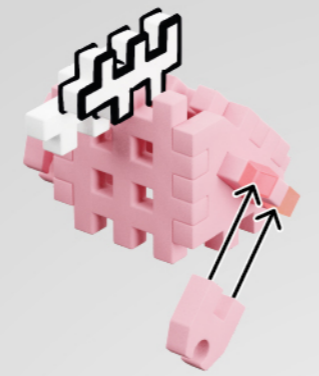
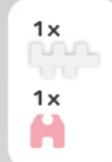
13



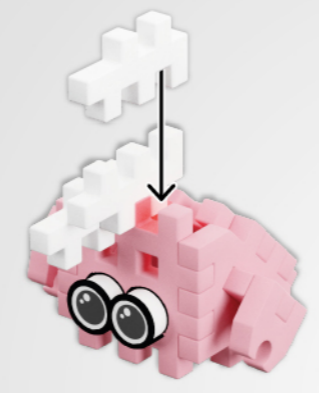
14



15



16



17

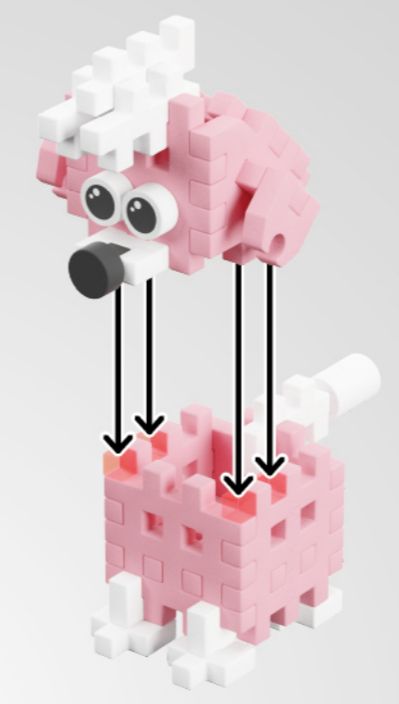


18



19

20



EN Poodle

A dog's whiskers are like sensors

The long whiskers on a dog's face are very sensitive. They help a dog sense objects and movements in the air around them, especially in the dark.

FR Caniche

Les moustaches du chien sont comme des radars

Les longues moustaches sur le museau du chien sont très sensibles. Elles aident le chien à détecter les objets et les mouvements de l'air autour de lui, surtout dans le noir.

ES Caniche

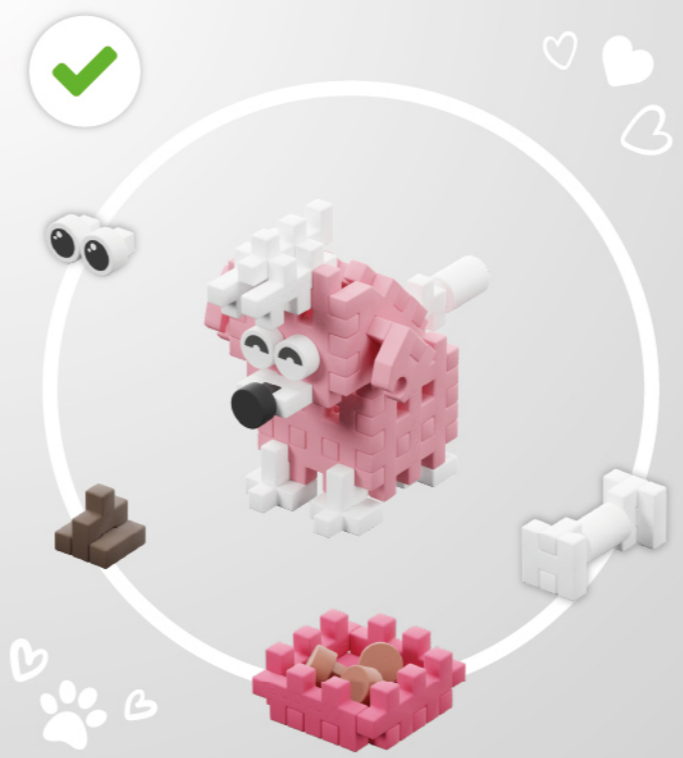
Los bigotes del perro son como sensores

Los largos bigotes en el hocico del perro son muy sensibles. Le ayudan a detectar objetos y movimientos del aire a su alrededor, especialmente en la oscuridad.

PL Pudel

Psie wąsy pomagają w orientacji

Wibrysy, czyli wąsy psa, są bardzo czule. Pomagają psu wyczuwać przedmioty i ruchy powietrza wokół niego, zwłaszcza w ciemności.



PL Zbierz wszystkie EN Collect them all FR Collectionnez-les tous ES Colecciónalos todos